

# Program in Clinical Laboratory Science

## Affiliated Colleges and Universities

**University of Missouri-Kansas  
City**

**Northwest Missouri State  
University**

**Missouri Western  
State University**

**University of  
Central Missouri**

**Rockhurst University**

**Kansas State University**

**Fort Hays  
State University**

**Graceland University**

## Contact Information

Jane M. Rachel, MT(ASCP), MA  
Director, Education and Scientific  
Development  
[jrachel@saint-lukes.org](mailto:jrachel@saint-lukes.org)  
(816) 932-2410

Dru Thurston  
Administrative Assistant  
[dthurston@saint-lukes.org](mailto:dthurston@saint-lukes.org)  
(816) 932-3335

CLS Program  
Department of Pathology  
Saint Luke's Hospital  
4401 Wornall Road  
Kansas City, Missouri 64111  
[www.saint-lukes.org](http://www.saint-lukes.org)

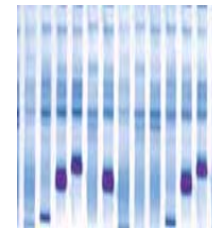
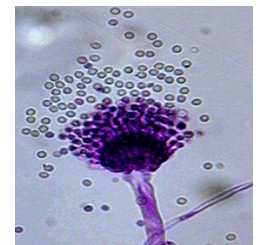
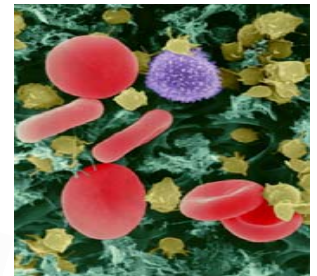
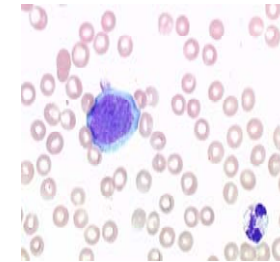
## Career Information

[www.ascls.org](http://www.ascls.org)  
[www.ascp.org](http://www.ascp.org)  
[www.naacls.org](http://www.naacls.org)

## Accreditation

This Program is accredited by the  
National Accrediting Agency for Clinical  
Laboratory Sciences (NAACLS):  
8410 W. Bryn Mawr Avenue, Suite 670  
Chicago, Illinois 60631-3425  
(773) 714-8880

*Saint Luke's Hospital is an Equal Opportunity  
Employer. Services are provided on a  
nondiscriminatory basis.*



 **Saint Luke's Hospital  
of Kansas City**

**SAINT LUKE'S HEALTH SYSTEM**

[saintlukeshealthsystem.org](http://saintlukeshealthsystem.org)

## **Career Options for Clinical Laboratory Scientists**

*Hospital labs*

*Independent labs*

*Forensic labs*

*Research labs*

*Laboratory management*

*Laboratory sales*

*Technical support*

*Information Services*

*Public health*

*Regulatory*

*Education*

*Technical writer*

*Medical writer*

## **Admission**

Admission is competitive for eight positions annually. Applications are accepted throughout the year. They are processed in late summer and a selected group of candidates are invited to interview for positions in the next year's class.

## **Academic Requirements**

Minimum requirements for consideration include:

### **Chemistry – 16 credit hours**

Includes general and upper division lecture and laboratory courses

### **Biology – 16 credit hours**

Includes general and upper division biology with microbiology and immunology as separate courses. Courses in cell biology, molecular biology, genetics and anatomy or physiology are encouraged.

### **Math – 3 credit hours**

College level or equivalent.

**GPA** - Minimum overall and science GPA of 2.5 on a 4.0 scale

## **Program Fees**

Fees include \$3000 tuition and \$600 for textbooks and supplies. Fees are subject to change without notice. Students are responsible for housing and living expenses.

## **CLS Program Clinical Courses**

**(credit hrs)**

**Clinical Microbiology (6)**

**Clinical Chemistry (6)**

**Clinical Hematology (6)**

**Immunohematology and  
Blood Banking (4)**

**Clinical Immunology,  
Immunochemistry, Flow  
Cytometry and Molecular  
Diagnostics (4)**

**CLS Topics I (2)**

**CLS Topics II (2)**